

INFESTATION OF POULTRY RED MITE LEADS TO:

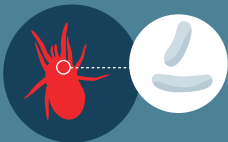
Stress/Pecking
Agitation



Additional
mortality



Spread of poultry
pathogens of bacterial
and viral origin



Anaemia



Weight loss



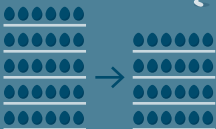
Allergic
reaction in
humans



Higher feed
conversion



Decreased egg
production



Agitation
& irritation

Decreased egg quality
through shell-thinning
and blood-spotting

